

WATSONVILLE

FIELD DAY 2026

May 8, 2026 • 181 Dairy Rd, Watsonville

ALTURAS

Day-Neutral
Flagship variety
3,092 California acres in 2026
#2 most planted variety in the state

Carpinteria

Day-Neutral
Fusarium resistant
Four seasons WT record
Late season advantage over Monterey

DUNSMUIR

CBC029 / 118.060-601

NEW RELEASE

Short-Day
28% higher average yield than Fronteras
Earlier than UC Victor
Large average size

CBC033

119.056-102

NEW RELEASE

Day-Neutral
51% late-season yield advantage vs Alturas
30% firmness advantage
Large average size, good appearance

BRISBANE

OPEN ACCESS

Day-Neutral
Fusarium resistant
Seven seasons WT record
16% yield advantage over Monterey

ARTESIA

OPEN ACCESS

Day-Neutral
Organic specialist
46% yield advantage over Monterey in Fusarium-infested fields

BELVEDERE

OPEN ACCESS

Short-Day
Premium quality
11.0+ °Brix
Top-ranked appearance short-day

ELCANO

NEW RELEASE

Short-Day
Fusarium resistant
Ideal for Central Mexico tunnels

Dear Growers, Shippers, and Industry Partners,

Welcome to Watsonville.

The 2026 lineup reflects a deliberate sharpening of how California Berry Cultivars brings genetics to growers.

This spring, we moved four varieties — Belvedere, Brisbane, Artesia, and Alhambra — to open access. No production agreement, no minimum acreage, no licensing meetings. Any licensed nursery in our network can propagate them, and growers can buy plants by the box at a published per-plant royalty rate. These are proven varieties, each with five or more planted seasons behind it, and each competes well in its market against other open-access options.

Our premium tier — Alturas, Adelanto, Castaic, Carpinteria, and our newest releases — remains licensed access, because the production royalty model that built those varieties is still the right model for them. Alturas finished 2026 at 3,092 California acres, the largest single-year gain of any named variety in the state. It remains, until today, unmatched in total season yield. Carpinteria, released at this field day last May, is already on roughly 125 commercial acres. In the coming months, those growers should see the late-season performance we promised.

Today, we are introducing two new selections: Dunsmuir / CBC029, a short-day variety out yielding Fronteras significantly in our trials, and CBC033, a firm day-neutral built to carry production deeper into the fall.

Behind the field, the infrastructure has caught up to the breeding. CBC International is finishing year two in Huelva, Spain. Our pathology lab is operational and putting real screening pressure on *Fusarium* and *Macrophomina*. Clean stock is moving faster than ever.

Pricing for 2026 is unchanged. Licensed-access varieties remain \$30 per 1,000 plants for short-day varieties and \$40 per 1,000 plants for day-neutral varieties. Open-access varieties are \$30 per 1,000 plants for Belvedere and \$40 per 1,000 plants for Brisbane, Artesia, and Alhambra, available through any participating nursery.

I'll be at every plot today. Come find me with your hardest questions.

Sincerely,

Kyle VandenLangenberg
CEO & Director of R&D
California Berry Cultivars, LLC

ARTESIA

Day-Neutral Organic Specialist • Open Access • Disease Tolerant

KEY METRICS — WT HE • FIVE-SEASONS

ARTESIA

2,590

g/plant avg • HE • 2020–2024

ARTESIA — 2020 DISEASE

2,762

g/plant • held through Fusarium outbreak

MONTEREY — 2020 SAME FIELD

1,891

g/plant • -32% vs 5-yr average

Artesia holds yield in organic production — even in disease years that weaken competing varieties
 Bred for day-neutral organic systems • Open access • 5 seasons replicated WT trials

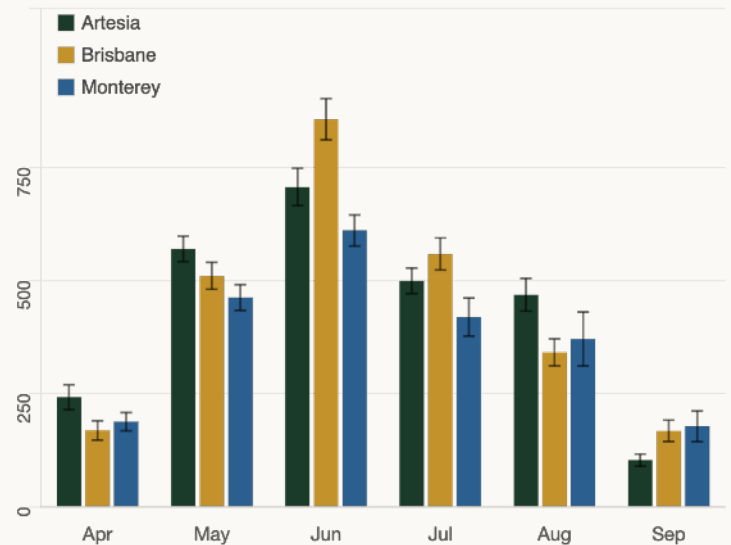
Artesia was selected from CBC’s breeding program for organic day-neutral production: disease-diverse soils, no synthetic fungicide support, and the need for a full stand through hot summers. Across five seasons of replicated WT trials alongside Brisbane and Monterey, Artesia delivered near-Brisbane yield under varied field conditions. In the 2020 Fusarium outbreak year, Artesia held at 2,762 g/plant, while Monterey dropped to 1,891 g/plant. Artesia also showed lower season-to-season variability than Monterey (s = ±205 vs ±331 g/plant), reflecting stronger yield stability under disease pressure.

YIELD SUMMARY — WT HE (g/plant), 2020–2024

Metric	Artesia	Brisbane	Monterey	ART vs MRY
5-yr avg	2,590	2,607	2,231	16%
Season s	±205	±178	±331	—
2020 Fus. ■	2,762	2,645	1,891	46%

s = standard deviation across 5 seasons.
 ■ 2020 = Dairy Rd Fusarium outbreak. Artesia and Brisbane held; Monterey -32% vs its own 5-yr average.

MONTHLY YIELD — WT HE AVG, 2020–2024



FRUIT QUALITY — WT HE AVG, 2020–2024

Variety	App (1–5)	Firmness (lb/in ²)				Avg
		May	Jun	Jul		
Artesia	3.38	1.258 a	1.159 a	1.065 a	1.164 a	
Brisbane	3.66	1.247 a	1.138 a	1.040 a	1.144 ab	
Monterey	3.24	1.142 b	1.116 a	1.017 a	1.092 b	

Means sharing a letter are not significantly different (Tukey HSD, p<0.05).

2020 Dairy Rd — Artesia held 2,762 g/plant through Fusarium. Monterey dropped to 1,891 in the same field.
 Bred for organic production — disease-diverse soils, no synthetic fungicide support, and full-stand survival through summer.

FRUIT SIZE — WT HE AVG, 2021–2024

Variety	Apr	May	Jun	Jul	Aug	Sep	Avg
Artesia	36.5 a	39.3 a	29.7 a	24.8 a	22.4 b	19.2 b	28.7 b
Brisbane	37.5 a	42.7 a	32.1 a	25.4 a	24.8 a	21.4 a	30.7 a
Monterey	37.4 a	41.6 a	31.8 a	25.0 a	23.7 a	20.5 a	30.0 ab

Berry size (g/fruit), WT HE avg 2020–2024. Means sharing a letter are not significantly different (Tukey HSD, p<0.05).

AVAILABILITY & DISEASE RESISTANCE

Open Access • Highly Resistant
 Available from BWKN
 Resistant to Fusarium, Macrophomina,
 Verticillium, and Phytophthora

BRISBANE

Watsonville Multi-Year Performance • Open Access • Fusarium Resistant

KEY METRICS — WT HE • SEVEN SEASONS

BRISBANE

2,569

g/plant avg • HE • 2019-2025

MONTEREY

2,216

6 season avg g/plant avg • HE • 2019-2024

BRISBANE ADVANTAGE

+16%

6-season comparison • same location & treatment

Brisbane outperforms Monterey in 5 of 6 seasons, with stronger appearance and post-peak firmness
 Open access • Fusarium resistant • Continuously trialed at Watsonville since 2019

SEVEN-SEASON YIELD — WATSONVILLE HE (g/plant)

Season	Brisbane	Monterey	Alturas	BRI vs MRV
2019	2,733	2,773	—	-1%
2020	2,645	1,891	—	40%
2021	2,808	2,257	3,430	24%
2022	2,390	2,145	2,994	11%
2023	2,457	2,088	2,830	18%
2024	2,199	2,140	3,079	3%
2025	2,749	—	3,272	—

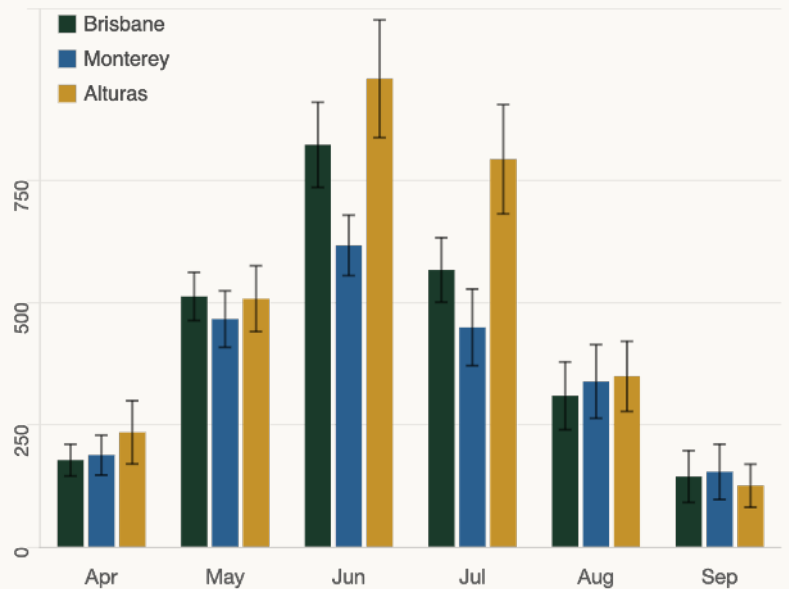
Brisbane outperforms Monterey in 5 of 6 seasons. Monterey was removed from WT trials after 2024.
 • 2020 = Dairy Rd field, Fusarium crown rot outbreak.

FRUIT QUALITY — WT HE AVG, 2021–2024

Variety	App (1–5)	Firmness (lb/in ²)				Avg
		May	Jun	Jul		
Alturas	3.86	1.162 b	1.037 b	1.039 a	1.076 b	
Brisbane	3.39	1.373 a	1.161 a	1.109 a	1.214 a	
Monterey	2.99	1.214 b	1.123 a	1.065 a	1.132 b	

Means sharing a letter are not significantly different (Tukey HSD, p<0.05).

MONTHLY YIELD — WT HE AVG, 2019–2024



2020 Dairy Rd — Brisbane held 2,645 g/plant during Fusarium outbreak. Monterey lost 32% in the same field, same season.
 Fusarium crown rot resistance is a meaningful agronomic advantage as soil disease pressure increases post-methyl bromide.

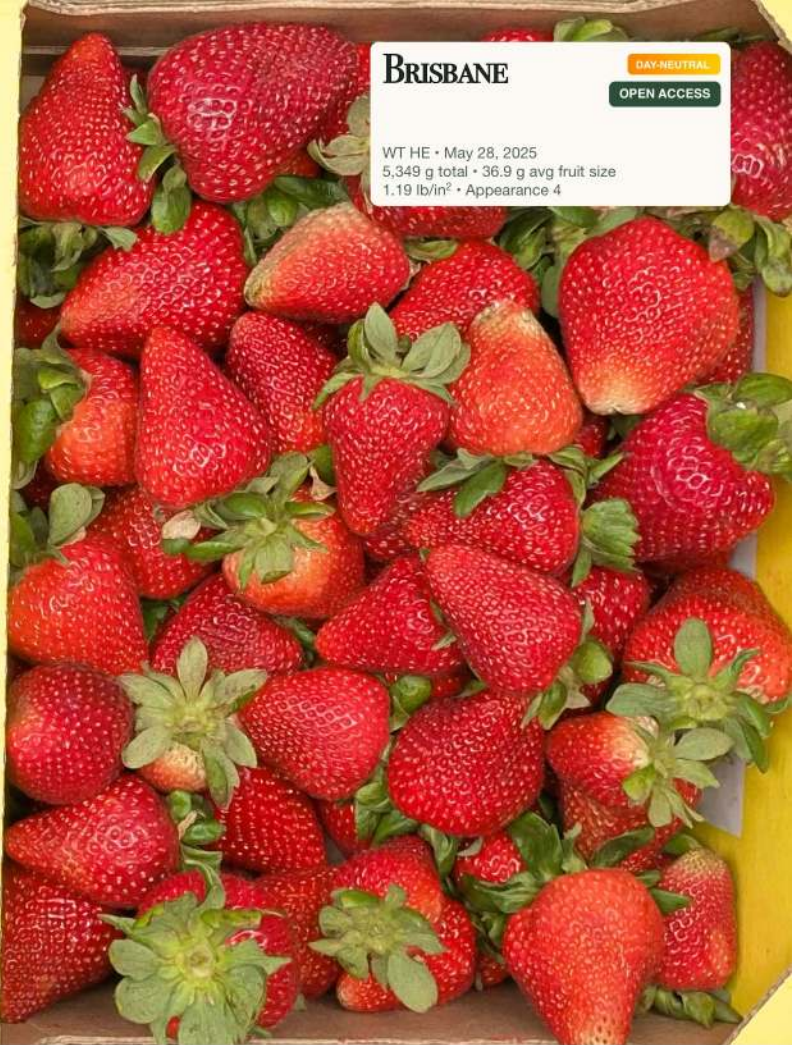
FRUIT SIZE — WT HE AVG 2019-2024

Variety	Apr	May	Jun	Jul	Aug	Sep	Avg
Brisbane	38.6 a	42.0 a	31.7 a	25.4 a	24.3 a	21.4 a	30.5 a
Monterey	38.2 a	43.0 a	31.4 a	24.6 a	22.8 b	19.9 b	29.6 a

Berry size (g/fruit), WT HE avg 2019–2024. Means within a column sharing a letter are not significantly different (Welch's t-test, p<0.05). Experimental unit = plot mean.

AVAILABILITY & DISEASE RESISTANCE

Open Access • Fusarium Resistant
 Available from Lassen Canyon Nursery
 Strong Monterey Alternative

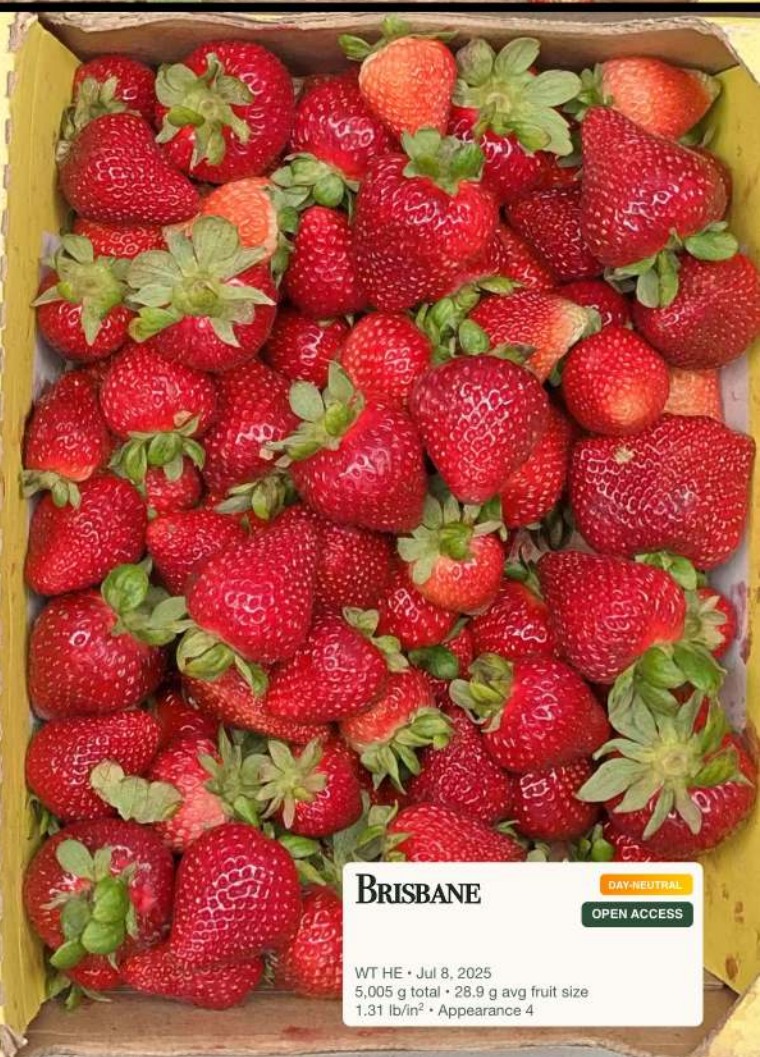


BRISBANE

DAY-NEUTRAL

OPEN ACCESS

WT HE • May 28, 2025
5,349 g total • 36.9 g avg fruit size
1.19 lb/in² • Appearance 4



BRISBANE

DAY-NEUTRAL

OPEN ACCESS

WT HE • Jul 8, 2025
5,005 g total • 28.9 g avg fruit size
1.31 lb/in² • Appearance 4

ALTURAS

Watsonville Multi-Year Performance • Day-Neutral Flagship

KEY METRICS — WT HE • 2021-2025

5-SEASON AVG — WT HE

3,121

g/plant • 2021-2025

2025 SEASON — WT HE

3,272

g/plant • 6 plots • 3 planting dates

CA PLANTED ACRES

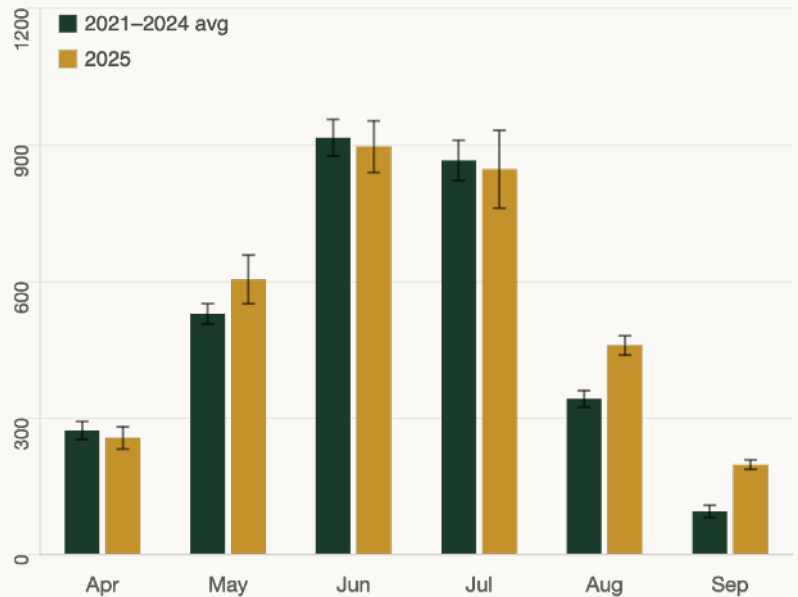
3,092

acres fall-planted • 2026 CA Strawberry Survey

#2 most planted named strawberry in California — 3,092 acres • +2,154 net new acres in 2026
 CBC's flagship day-neutral — bred for day-neutral production window, continuously trialed at WT since 2021

FIVE-SEASON YIELD — WT HE

Season	Alturas	Size (g)	App (1–5)
2021	3,430	38.3	4.02
2022	2,994	36.2	3.68
2023	2,830	36.4	3.97
2024	3,079	35.1	4.01
2025	3,272	35.1	4.00
5-yr avg	3,121	36.2	3.94



FRUIT QUALITY — WT HE AVG, 2021–2025

Month	App (1–5)	Firmness (lb/in ²)	Size (g)
May	3.83	1.179	46.2
Jun	4.34 ★	1.064	39.7
Jul	4.45 ★	1.070	31.7
Aug	3.93	—	26.8
Sep	3.68	—	23.6

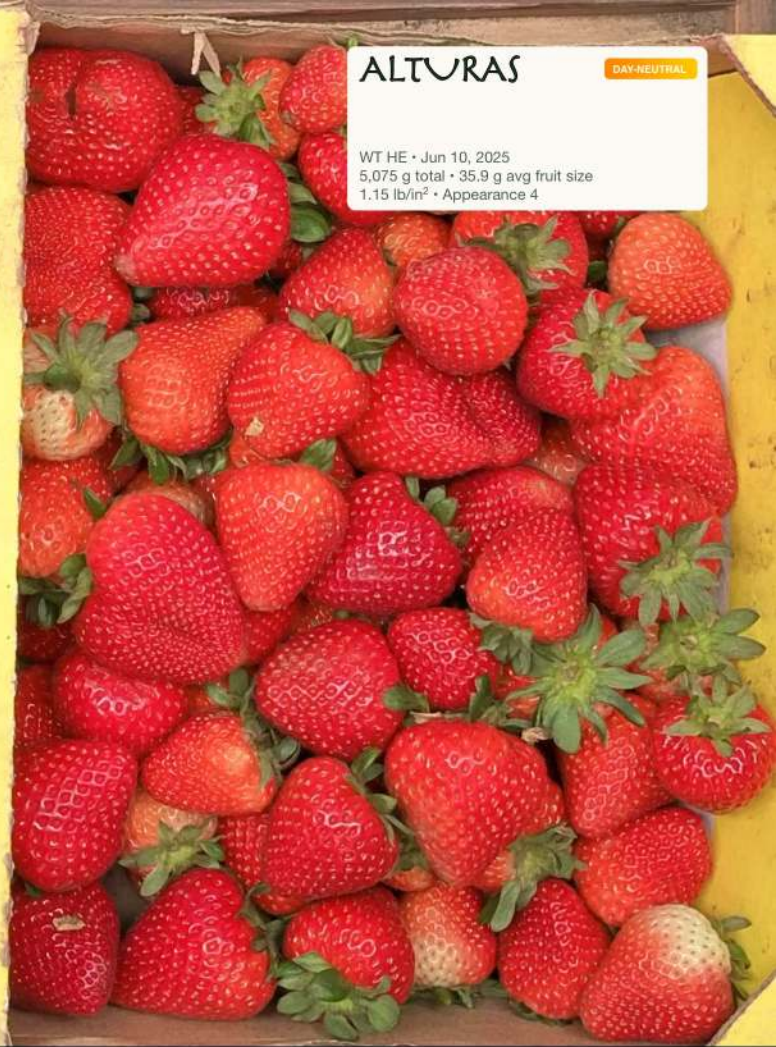
3,121 g/plant average — five seasons, same field, same treatment. Alturas is the day-neutral standard.
 3,092 acres planted • +2,154 net new acres in 2026 • #2 named variety in California

2026 CA STRAWBERRY COMMISSION ACREAGE SURVEY

Alturas added 2,154 net new acres in 2026 — the largest single-variety gain of any named strawberry program in California that season. At 3,092 acres, Alturas carries 9.5% of all fall-planted acreage statewide, second only to proprietary material.

Five consecutive Watsonville seasons show what growers already know: Alturas delivers top-tier day-neutral yield, with appearance ratings that hold strong through peak season. Combined with strong Fusarium resistance, Alturas returns exceptional value to growers.

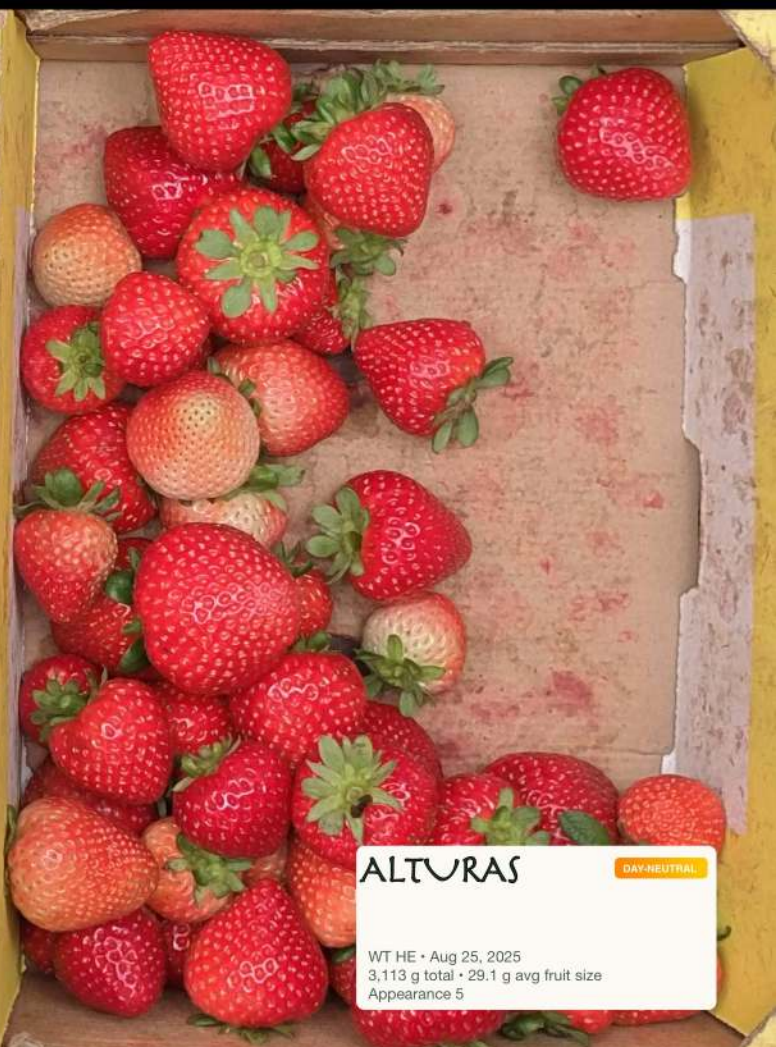
Licensed Access • Highly Resistant
 Available from licensed CA nurseries
 Resistant to Fusarium



ALTURAS

DAY-NEUTRAL

WT HE • Jun 10, 2025
5,075 g total • 35.9 g avg fruit size
1.15 lb/in² • Appearance 4



ALTURAS

DAY-NEUTRAL

WT HE • Aug 25, 2025
3,113 g total • 29.1 g avg fruit size
Appearance 5

Carpinteria

Watsonville Multi-Year Performance • Late-Season Day-Neutral

KEY METRICS — WT HE • 2022–2025

4-SEASON AVG — WT HE

2,911

g/plant • 2022-2025

2025 SEASON — WT HE

2,966

g/plant • 6 plots • 3 planting dates

LATE-SEASON YIELD

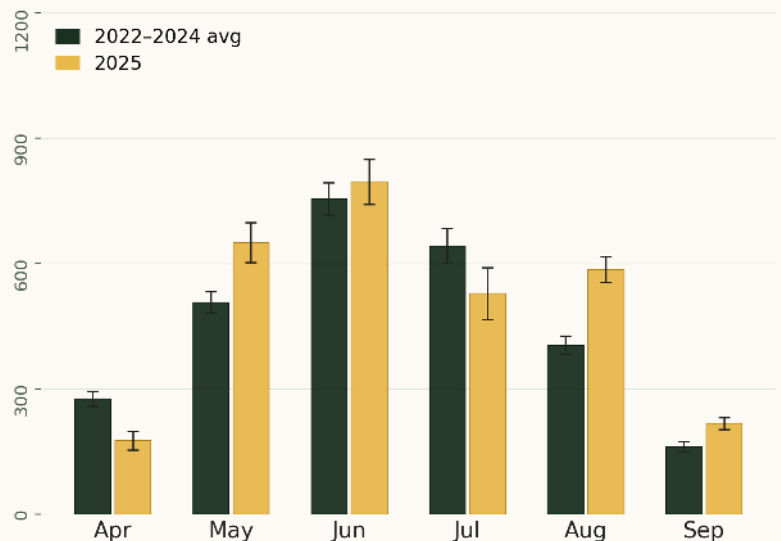
627

g/plant Aug-Sept • HE

Late-season day-neutral that carries — 73% more Aug–Sep yield than Monterey, 3-year avg 2022–2024
 Statistically firmer than Alturas • Holds appearance 4.24 in August

FOUR-SEASON YIELD — WATSONVILLE HE

Season	Carpinteria (g/pl)	Size (g)	App (1–5)
2022	2,969	35.1	4.26
2023	2,723	36.7	3.81
2024	2,984	35.0	4.08
2025	2,966	34.9	3.97
4-yr avg	2,911	35.4	4.03



FRUIT QUALITY — WT HE AVG, 2022–2025

Month	App (1–5)	Firmness (lb/in ²)	Size (g)
May	3.96	1.259	47.8
Jun	4.32 ★	1.132	37.2
Jul	4.07	1.120	28.9
Aug	4.24 ★	—	26.2
Sep	4.00	—	22.2

Plant Carpinteria Nov. 1–15 in Watsonville/Salinas — two weeks supplemental chill = 9% higher yield than October plantings
 Nov. plantings beat late-Oct. plantings in 4 of 4 seasons • average gain of 244 g/plant

LATE-SEASON YIELD — CARPINTERIA vs MONTEREY

Across three overlapping Watsonville HE seasons, Carpinteria delivered 568 g/plant of August-onward yield versus Monterey’s 328 g/plant — a 73% advantage on the same trial ground. Late fruit also held larger: approximately 24 g per berry in Aug–Sep versus Monterey’s approximately 21 g.

Carpinteria is statistically firmer than the Watsonville day-neutral benchmark, Alturas (+0.10 lb/in², p < 0.001 across 24 plots), and holds appearance ratings of 4.24 in August. Where most day-neutrals tail off after July, Carpinteria carries.

Licensed Access • Highly Resistant
 Available from licensed CA nurseries
 Resistant to Fusarium



Carpinteria

DAY-NEUTRAL

WT HE • Mar 30, 2026
3,270 g total • 47.0 g avg fruit size
Appearance 4

9



Carpinteria

DAY-NEUTRAL

WT HE • Aug 25, 2025
3,026 g total • 25.4 g avg fruit size
Appearance 5

6



2026 Oxnard Performance • Open Access • Competitor Trial Comparison

YIELD - TRAYS/ACRE • DEC—MAR 2026

CBC HE — JAN—MAR

5,048

trays/acre avg • 6 plots • HE plants

CBC LE — NO-CHILL TEST

4,044

trays/acre avg • 2 reps • LE plants

SEVEN SEASONS HE AVG

7,100 ± 370

trays/acre 2018–2025 • OX HE trial • 31 plots

Belvedere, appropriately treated, outperforms the same variety in a competitor’s Oxnard trial by 56%
and still beats their best-performing selection at equivalent plant density

SIDE-BY-SIDE COMPARISON — CBC YIELD DATA VS COMPETITORS

Source	Trial	Dec T/A	Jan T/A	Feb T/A	Mar T/A	Total through Mar 31
CBC (our data)	HE Rep 1	150	889	993	3,097	5,128
CBC (our data)	HE Rep 2	157	776	1,342	2,693	4,968
Competitor trial	OX	—	524	886	1,830	3,240

FRUIT QUALITY — COMPETITOR TRIAL DATA • BELVEDERE VS KEY COMPETITORS

Variety	Size (g)	Skin Score	Firmness	Firmness vs Belvedere
Belvedere (competitor trial)	29.9	8.5 ★	1,047	— baseline —
Belvedere (CBC trial)	36.0	—	1.172 lb/in ²	—
Competitor Variety 1	32.0	8.0	747	-29% softer
Competitor Variety 2	35.4	8.0	813	-22% softer

Competitor trial data: Belvedere skin 8.5 — tied #1 • Firmness leads competitor varieties by 23-29%.
CBC OX HE 2026: size 32.5g • Firmness 1.23 lb/in² • Competitor firmness method differs; relative rankings consistent.

YIELD CONTEXT — BELVEDERE HE VS COMPETITOR TRIAL SELECTIONS

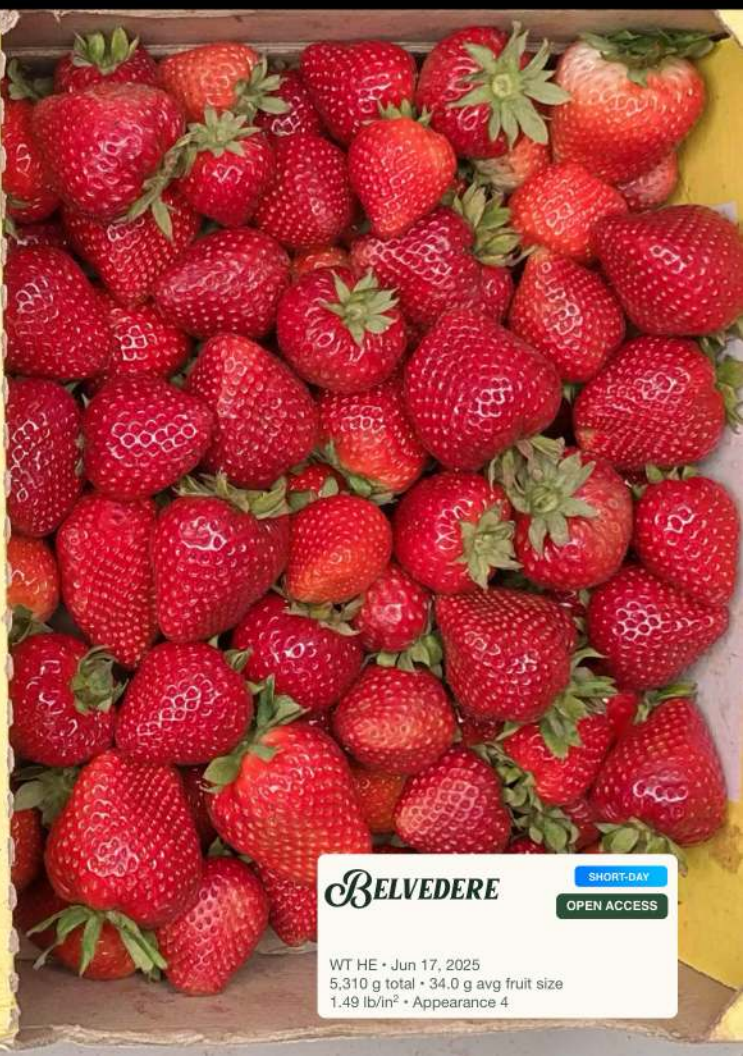
Variety	Source / Block	Plants/Acre	Jan–Mar T/A	vs Belvedere HE
Belvedere (CBC data)	CBC Oxnard	24,000	5,048	— baseline —
Competitor Variety 3	Comp. SD Block	24,000	4,808	-5% below
Competitor Variety 4	Comp. Via Block	25,000	4,148	-18% below
Competitor Variety 1	Comp. Via + SD	24,000-25,000	3,754 / 3,884	-23-26% below
Belvedere (competitor trial)	Comp. SD Block	24,000	3,240	-36% below

CBC data: 2026 OX HE/LE trial, 2 reps each, 20 plants/plot. Dec–Mar capped Mar 31 for comparison.
Tray/acre at 24,000 plants/acre × 4,800 g/tray - competitors conversion to trays / acre formula.
Competitor trial data: published 2026 Oxnard field trial handout. Size/firmness from competitor data.



BELVEDERE SHORT-DAY
OPEN ACCESS

WT HE • May 7, 2025
3,489 g total • 50.9 g avg fruit size
Appearance 5



BELVEDERE SHORT-DAY
OPEN ACCESS

WT HE • Jun 17, 2025
5,310 g total • 34.0 g avg fruit size
1.49 lb/in² • Appearance 4

DUNSMUIR Short-Day • New Release

High-yield short-day selection • Fusarium Resistant

YIELD — g/plant • OX 2026 HE • THROUGH APR 27

DUNSMUIR

1,416

g/plant • HE

ADELANTO

1,156

g/plant • HE

BELVEDERE

1,154

g/plant • HE

Dunsmuir outperforms Adelanto and Belvedere by 22% on yield, with better appearance scores and larger fruit
Advanced greenhouse trials indicate strong Fusarium resistance

MONTHLY YIELD BREAKDOWN — OX 2026 HE (g/plant)

Variety	Dec	Jan	Feb	Mar	Apr	Season Total
Dunsmuir	1	84	239	837	254	1,416
Adelanto	68	209	251	527	100	1,156
Belvedere	31	166	234	579	144	1,154

GROWER SEASON SUMMARY — OXNARD, PETIT RANCH

	DUNSMUIR	118.066-601 / CBC030	121.008-601 / CBC045	121.257-605 / CBC043
Trial acreage	0.36	0.48	1.80	1.10
Trays/acre	7,450	6,163	5,954	7,197
Pre-Feb. 1 trays	553	496	279	537
Value estimate	\$99,681	\$81,536	\$79,010	\$93,417

Grower-reported trays per acre, Petit Ranch, Oxnard, CA. Dec. 2025–May 2, 2026. Pre-Feb. 1 yield shown as an early-production indicator. Value estimates based on average tray price.

DUNSMUIR leads in yield and berry size • Highest season performance among multiple varieties

Firmness 1.20 lb/in² is within the normal short-day range • Appearance 3.62/5.0 outperforms Adelanto (3.24)

MULTI-YEAR OX HE COMPARISONS

Variety	Seasons	Yield (g/pl)	Early Yield (g/pl)	Size (g)	Late Size (g)	App (1–5)	Firmness (lb/in ²)
Dunsmuir	2021–2025	1,693	230	36.6	28.9	3.79	1.191
Belvedere	2021–2025	1,451	297	35.2	30.3	3.81	1.38
Adelanto	2021–2025	1,285	319	35.8	31.4	3.48	1.329
Fronteras	2021–2024	1,325	264	35.6	27.7	3.62	1.123
Victor	2022 & 2024	1,519	163	33.5	24.5	3.26	1.195

Licensed Access • Fusarium Resistant

Available in limited quantities from CBC in fall of 2026 • From California nurseries the fall of 2027

CBC033

Day-Neutral • New Release

New high-yield, firm day-neutral

KEY METRICS — WT 2025 HE • 6 PLOTS EACH

CBC033 FIRMNESS

1.43

lb/in² avg • Alturas 1.10 • +30%

CBC033 LATE SEASON

991

g/plant Aug-Sep • Alturas 657 • +51%

CBC033 FULL SEASON

3,447

g/plant • Alturas 3,272 • +5%

CBC033 is 30% firmer than Alturas — and delivers 51% more yield in August and September
 Season-long yield advantage (+5%) • Same berry size • Holds production into fall

ALL-TRAIT COMPARISON — WT 2025 HE

Trait	CBC033	Alturas	Delta	Notes
Full season yield (g/plant)	3,447	3,272	5%	Slight edge across all 6 plots
Late season (Aug-Sep)	991	657	51%	Late season advantage when price returns
Berry size (season avg)	35.1g	35.1g	tied	Identical size profile
Late size (Aug-Sep avg)	26.9g	27.2g	-0.3g	Essentially identical late-season fruit
Firmness (lb/in ²)	1.43	1.10	30%	Strongest firmness advantage — critical for DN shelf life
Appearance (1-5)	3.78	4.00	-0.22	Slight edge to Alturas; within normal range

MONTHLY YIELD — g/plant • HE AVG • WT 2025

Variety	Mar	Apr	May	Jun	Jul	Aug	Sep	Season
CBC033	6	218	575	839	818	683	308	3,447
Alturas	12	256	604	896	847	459	198	3,272
CBC033 vs Alturas	-50%	-15%	-5%	-6%	-3%	49%	56%	5%

Aug-Sep: CBC033 produces 334 more g/plant than Alturas — approximately 1,100 extra trays/acre late season
 Firmness 1.43 lb/in² vs Alturas 1.10 • 30% advantage supports shelf-life edge when late-season heat builds

MULTI-YEAR WT HE COMPARISONS

Variety	Seasons	Yield (g/pl)	Late Yield (g/pl)	Size (g)	Late Size (g)	App (1-5)	Firmness (lb/in ²)
CBC033	2023-2025	3,072	781	35.7	25.6	3.73	1.434
Alturas	2023-2025	3,060	520	35.9	26.4	3.99	1.127
Brisbane	2023-2025	2,468	424	32.0	23.4	3.46	1.299
Monterey	2023-2024	2,114	394	31.2	21.2	3.09	1.159

Licensed Access • Resistant to Fusarium
 Limited quantities available from CBC in fall 2026 • California nursery availability in fall 2027

CBC033 = 119.056-102. Alturas / CBC017. WT HE trial data, 2023-2025; 2025 trial included 3 planting dates (Oct. 29, Nov. 5, Nov. 12), 2 reps, 20 plants/plot. Late season = Aug 1 through season end. Firmness in lb/in². Appearance scale 1-5.



CBC033
119.056-102

NEW RELEASE
DAY-NEUTRAL

WT HE • Jun 30, 2025
4,958 g total • 32.4 g avg fruit size
1.32 lb/in² • Appearance 5



CBC033
119.056-102

NEW RELEASE
DAY-NEUTRAL

WT HE • Aug 26, 2025
4,497 g total • 28.1 g avg fruit size
Appearance 4

ELCANO Planta de día corto

Fruta Grande • Alta Firmeza • Sabor Excepcional

RENDIMIENTO — g/planta • HUELVA 2026 HE

ACUMULADO 2026

1,317

g/planta • ene-abr • 35 cm entre plantas

TAMAÑO DE FRUTA

36-38g

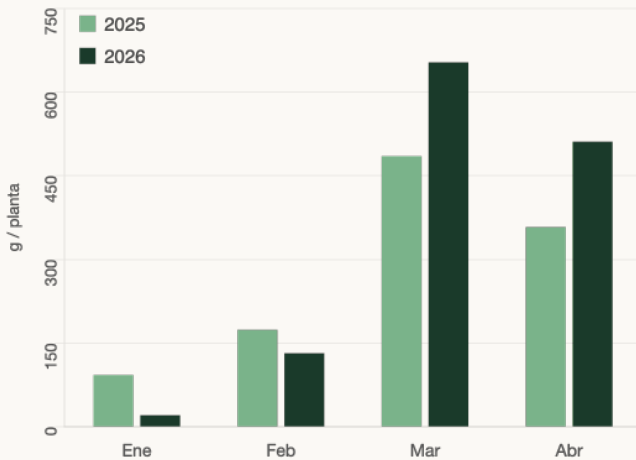
peso promedio por fruta • extra grande

°BRIX PROMEDIO

9-11°

hasta 14 para jugo — más alto eval.

En Zamora, CBC027 superó a Bounty por más del 35% en rendimiento durante diciembre
Excelente vida de anaquel • rendimiento sólido bajo macrotúnel



CBC027 es una variedad de fresa de día corto desarrollada por California Berry Cultivars, con excelente rendimiento bajo macrotúneles en Huelva y en el centro de México. Produce fruta extra grande y firme, con 9–11 °Brix en promedio, entre los valores más altos de todos los materiales evaluados.

Rendimiento 2026: 1,317 g/planta acumulados (ene-abr, en curso).

Temporada 2025: 1,338 g/planta — pico de 484 g/planta en marzo.

Tamaño: 36–38 g en promedio; fruta extra grande y uniforme.

Firmeza: 1.01–1.09 lb/in² — excelente vida de anaquel.

°Brix: 9–11 en promedio; hasta 14 en fruta para jugo.

Versatilidad: planta en cepellón para cosecha temprana o raíz desnuda.

DESGLOSE MENSUAL — g/planta PROMEDIO • HE • 21 PARCELAS (2026, 35 cm) / 10 PARCELAS (2025)

Temporada	Ene	Feb	Mar	Abr	May	Acumulado
CBC027 HV 2026 (35 cm, en curso)	21	132	653	511	—	1,317
CBC027 HV 2025 (completa)	91	173	484	357	230	1,335

CALIDAD Y MANEJO

Atributo	CBC027 HV	Notas
Tamaño promedio	36–38g	Extra grande, muy uniforme
Firmeza	1.01–1.09 lb/in ²	Vida de anaquel superior
°Brix	9–11 / hasta 14	El más alto evaluado
Apariencia (1–5)	3.0	Consistente entre parcelas
Espaciado óptimo	35 cm	+28% vs 23 cm en Huelva

INFORMACIÓN DE MANEJO

Plantación: 15 de agosto en macrotúnel (México) / octubre en Huelva

Manejo fitosanitario: oídio (cenicilla), botrytis y ácaros

Formas de planta: cepellón para cosecha temprana o raíz desnuda para mayor tamaño al final del ciclo

Espaciado recomendado: 35 cm — rendimiento 28% superior vs 23 cm

Disponible por medio de CBC y Eurosemillas